

*"The state recently issued penalties totaling more than \$4 million to developers in Loudon, Marion, Franklin, Polk and Humphreys counties."  
(Tennessee)*

## ENFORCEMENT

If inspections by local, state, or federal inspectors reveal repeated violations of this ordinance, penalties such as fines and stop work orders may ensue. Violations include inadequate implementation and maintenance of BMPs and non-stormwater discharges. The current fine schedule per day of offense for uncontested EPSC violations are as follows per Ordinance 42-2007:

1st Offense.....	\$100.00
2nd Offense.....	\$300.00
3rd Offense.....	\$500.00

(The pictures below are from Hopkinsville.)

### The Good....



Well-stabilized soil with seeding



Proper construction entrance

### The Bad...



Silt fences should be properly trenched-in to prevent breaching



Sediment and construction trash should never reach a storm drain

### ...and The Ugly!

## Resources and Contacts

For hard copies of the Erosion Prevention and Sediment Control Ordinance, please visit the Hopkinsville-Christian County Planning Commission office during normal office hours, 8:00 - 5:00, M-F:

**Hopkinsville-Christian County Planning Commission**  
101 N. Main, St, Hopkinsville, KY 42241

The ordinance may also be downloaded from the following websites:

[www.hoptown.org/agencies/planning-commission](http://www.hoptown.org/agencies/planning-commission)  
[www.hopkinsville-stormwater.com](http://www.hopkinsville-stormwater.com)

To download a copy of the Kentucky BMP Manual, go to the following website link:

[www.kytc.state.ky.us/EnvAnalysis/Stormwaterquality/link\\_resource.htm](http://www.kytc.state.ky.us/EnvAnalysis/Stormwaterquality/link_resource.htm)

For Kentucky regulations or permits:

[www.water.ky.gov/permitting/wastewaterpermitting/KPDES/storm/](http://www.water.ky.gov/permitting/wastewaterpermitting/KPDES/storm/)

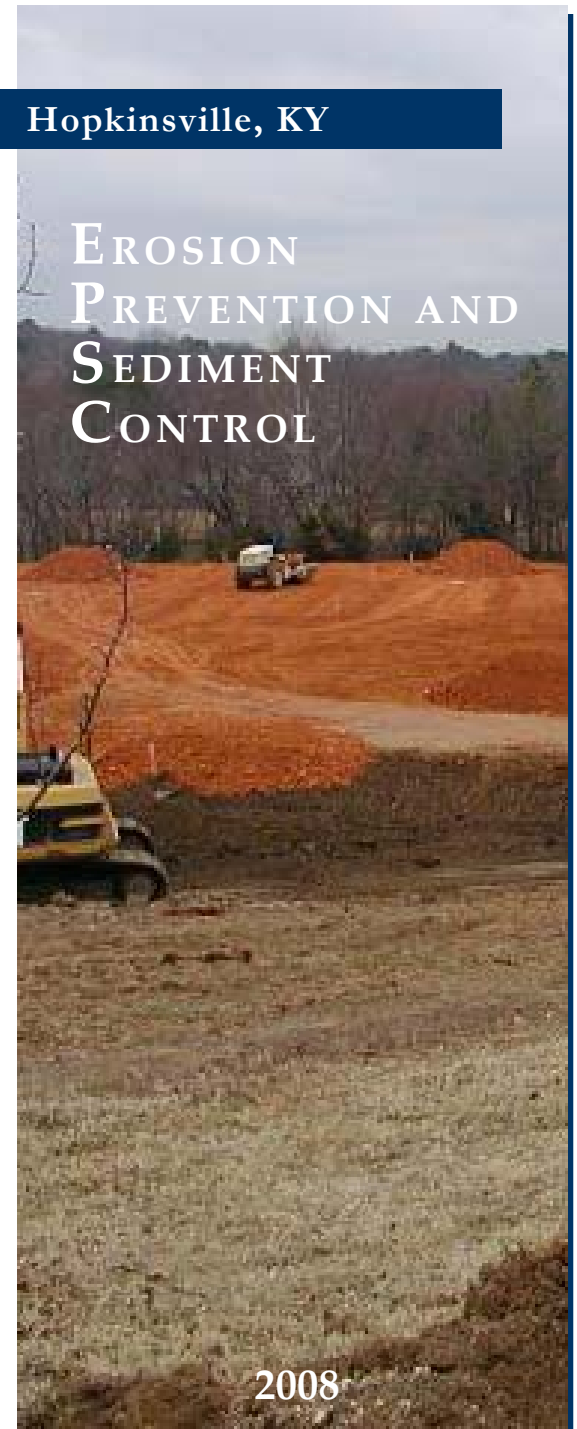
For additional information regarding the EPSC Ordinance, permits, or fees, please contact the Hopkinsville Surface and Storm Water Utility.



P.O. BOX 588  
HOPKINSVILLE, KY 42241-0588  
(270) 887-4035  
[www.hopkinsville-stormwater.com](http://www.hopkinsville-stormwater.com)

## Hopkinsville, KY

# EROSION PREVENTION AND SEDIMENT CONTROL



2008

# What is the Problem?

Construction site runoff is one of the leading contributors to stream and water pollution. This sediment-laden runoff clogs storm drains, smothers fish gills, destroys aquatic habitat, and provides an adherent for pollutants which diminish the quality of our water.

## EPSC ORDINANCE

To improve our water quality and stay in compliance with state and federal regulations, Hopkinsville has adopted an Erosion Prevention and Sediment Control (EPSC) Ordinance 37-2007. This ordinance regulates stormwater runoff from



Sediment-laden runoff discharging into a river

construction sites that disturb more than 2000 square feet. Sites that disturb more than one acre must also comply with state permitting requirements and are subject to state and local inspections. For more information on the state KYR10 Permit, please contact the Kentucky Division of Water or online at [www.water.ky.gov/permitting/wastewaterpermitting/KPDES/storm/](http://www.water.ky.gov/permitting/wastewaterpermitting/KPDES/storm/).

*If you observe construction sites discharging sediment or other pollutants, please call (270) 887-4035.*

## ORDINANCE HIGHLIGHTS

This ordinance is applicable to all construction activities within Hopkinsville except the following typical exemptions (not inclusive):

- Minor land disturbing activities such as home gardens
- Activities that disturb less than 2000 square feet and are no closer than 50 feet to a stream
- Site investigation and surveying activities with minimal land disturbance
- Emergency work to ensure health and safety of the public



To minimize maintenance, reduce runoff, and to avoid possible penalties, Best Management Practices (BMPs) should closely follow approaches outlined in the Kentucky Erosion Prevention and Sediment Control Field Guide available from the Kentucky Division of Water. The guide may be downloaded from [www.conservation.ky.gov/](http://www.conservation.ky.gov/). Pay particular attention to the following BMPs:

- proper silt fence installation and maintenance
- storm drain protection
- adequate construction entrance pads
- slope protection and soil stabilization

No sediment or pollutants shall leave a construction site up to a 1 1/2 inch precipitation event.

## PERMITS AND PLANS



For construction sites disturbing 2000 square feet or more, a Grading and Clearing Permit is required. Those that disturb one acre or more must also submit a comprehensive EPSC plan for review and approval before construction begins. EPSC plans must follow the Kentucky BMP Manual.

Grading and Clearing Permit.....\$50.00  
EPSC Plan.....\$50.00

**! All applicable permits and BMP plans must be kept on-site and available for inspections.**

## INSPECTIONS

Periodically, inspections of construction sites will take place by local, state, and/or federal officials, especially after a rain event of 1/2 inch or greater to ensure that EPSC measures are being implemented and properly maintained. Contractors or developers should have their own qualified EPSC inspector, and detailed records of inspections must be maintained.

